

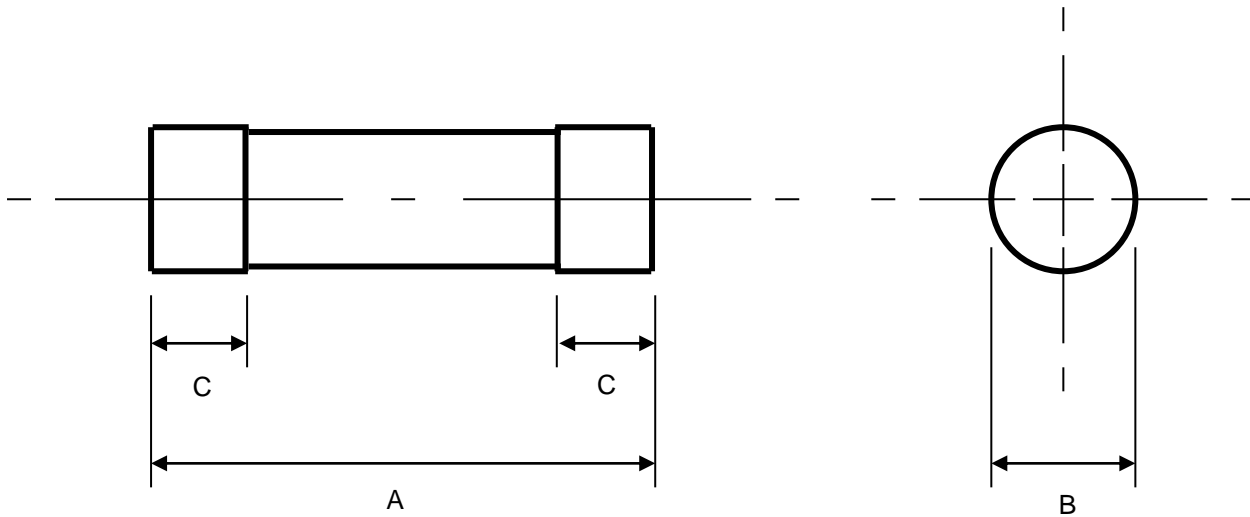
FUSEMASTERTM

2076F SERVICE FUSES

TECHNICAL SPECIFICATIONS FOR TYPES "2076F" HOUSE
SERVICE CUT-OUT FUSE LINKS COMPLYING WITH
AS2005, IEC269-1, AS/NZS 60269-3

RATED VOLTAGES	415VAC
CURRENT RATINGS	63A to 100A
RATED BREAKING CAPACITY	80kA
FUSING FACTOR	Class Q1 (not exceeding 1.5)
OUTLINE DIMENSIONS	TS031
TIME/CURRENT CHARACTERISTICS	TS032 , TS033 , TS034
CUT-OFF CHARACTERISTICS	TS035
POWER DISSIPATION VALUES	TS036

FUSEMASTER®



RATED BREAKING CAPACITY: 80kA at 415V AC

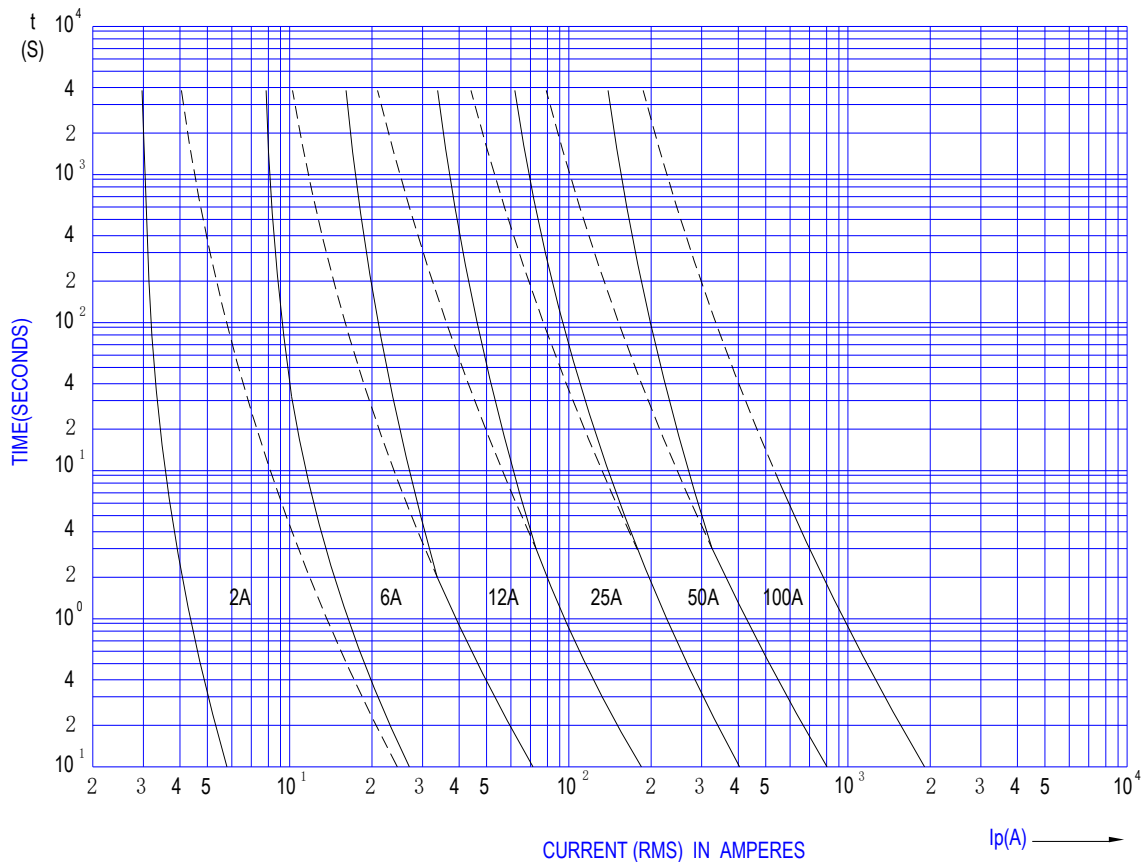
Part Number	Rated Voltage (V)	Current Rating (A)	Dimensions (mm)		
			A	B	C
2076F	415	63, 80, 100	76 ± 0.2	20.6 ± 0.1	16 ± 0.1

OUTLINE DIMENSIONS TYPE 2076F CUT-OUT FUSE LINKS TO AS2005, IEC269-1 & AS/NZS60269-3		SCALE	-
		DATE	01/02/2005
		DRAWN	TECH-GAL
ART. No.	TS031 FUSEMASTER 4/1-7 FRIARS ROAD MOORABBIN VICTORIA 3189 AUSTRALIA	APPROVED	GM-FUS
		ALTERATION	-

FUSEMASTER®

CYLINDRICAL SERVICE FUSE TECHNICAL SPECIFICATIONS

TIME / CURRENT CURVES

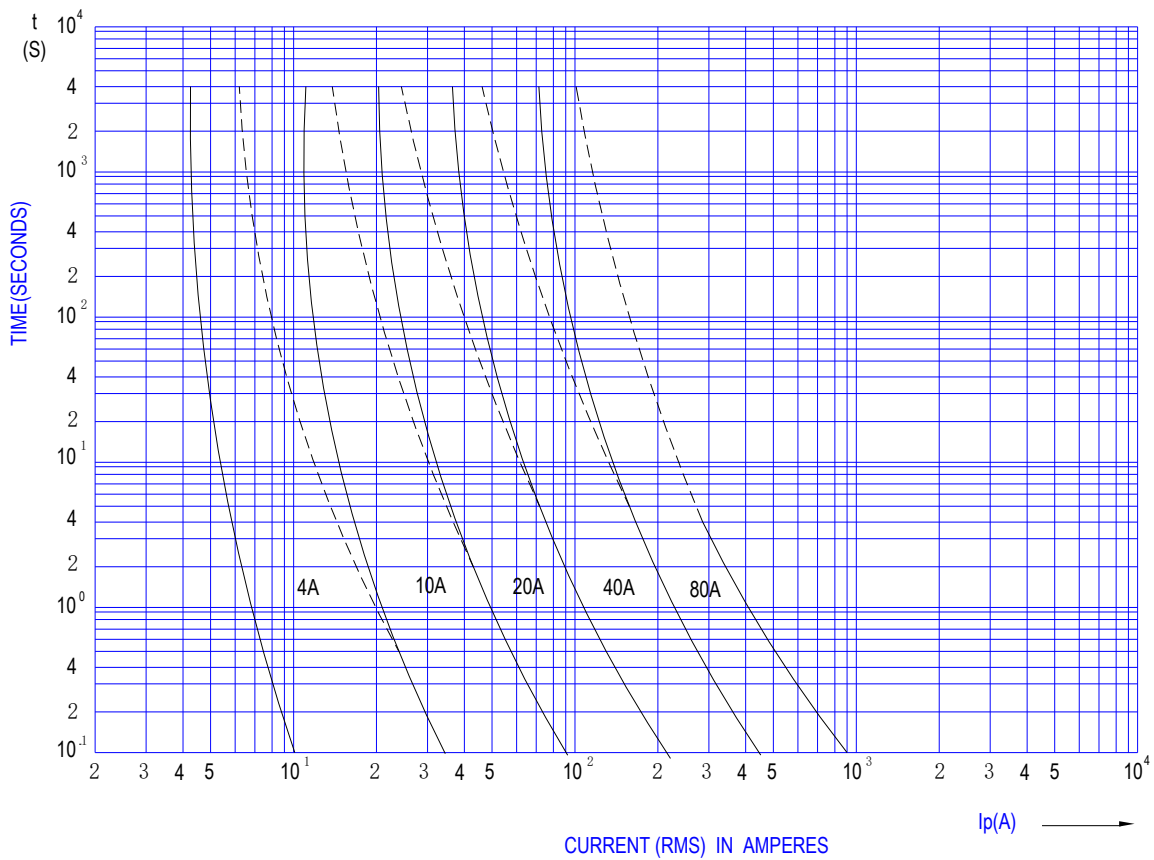


TIME / CURRENT CHARACTERISTICS 2A , 6A , 12A , 25A , 50A , 100A TYPE 2076F CUT-OUT FUSE LINKS TO AS2005, IEC269-1 & AS/NZS60269-2.1		SCALE	-
		DATE	01/02/2005
		DRAWN	TECH-GAL
ART. No.	FUSEMASTER 4/1-7 FRIARS ROAD MOORABBIN VICTORIA 3189 AUSTRALIA	APPROVED	GM-FUS
TS032		ALTERATION	-

FUSEMASTER®

CYLINDRICAL SERVICE FUSE TECHNICAL SPECIFICATIONS

TIME / CURRENT CURVES

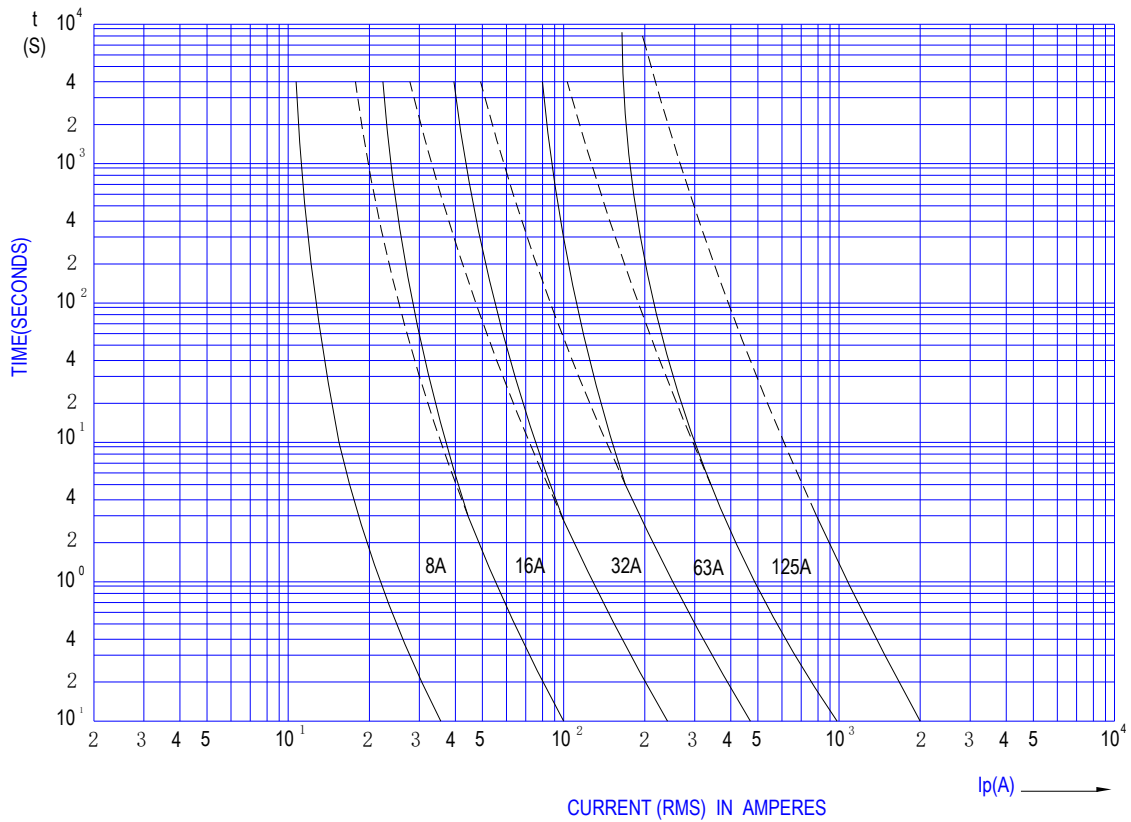


TIME / CURRENT CHARACTERISTICS 4A , 10A , 20A , 40A , 80A TYPE 2076F CUT-OUT FUSE LINKS TO AS2005, IEC269-1 & AS/NZS60269-2.1		SCALE	-
		DATE	01/02/2005
		DRAWN	TECH-GAL
ART. No.	FUSEMASTER 4/1-7 FRIARS ROAD MOORABBIN VICTORIA 3189 AUSTRALIA	APPROVED	GM-FUS
TS033		ALTERATION	-

FUSEMASTER®

CYLINDRICAL SERVICE FUSE TECHNICAL SPECIFICATIONS

TIME / CURRENT CURVES

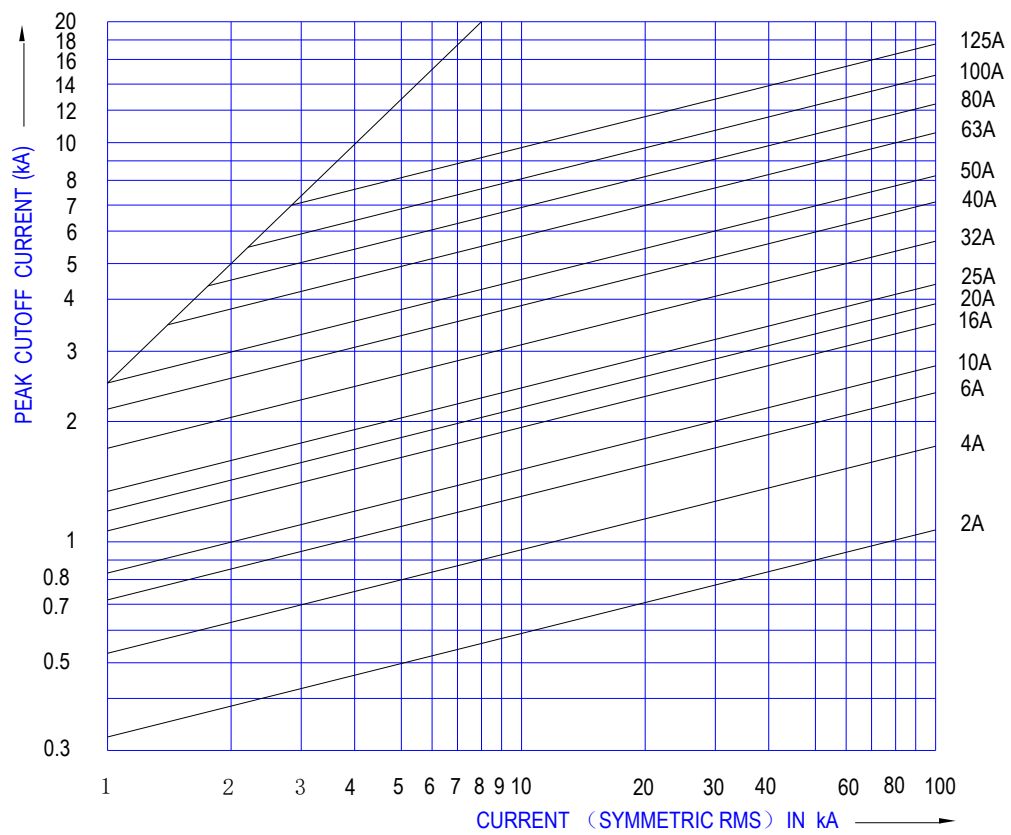


TIME / CURRENT CHARACTERISTICS 8A , 16A , 32A , 63A , 125A TYPE 2076F CUT-OUT FUSE LINKS TO AS2005, IEC269-1 & AS/NZS60269-2.1		SCALE	-
		DATE	01/02/2005
		DRAWN	TECH-GAL
ART. No.	FUSEMASTER 8 COMMERCIAL ROAD MOORABBIN VICTORIA 3189 AUSTRALIA	APPROVED	GM-FUS
TS034		ALTERATION	-

FUSEMASTER®

CYLINDRICAL SERVICE FUSE TECHNICAL SPECIFICATIONS

PEAK CUTOFF VALUES



PEAK CUT-OFF VALUES TYPE 2076F CUT-OUT FUSE LINKS TO AS2005, IEC269-1 & AS/NZS60269-2.1		SCALE	-
		DATE	01/02/2005
		DRAWN	TECH-GAL
ART. No.	FUSEMASTER 8 COMMERCIAL ROAD MOORABBIN VICTORIA 3189 AUSTRALIA	APPROVED	GM-FUS
TS035		ALTERATION	-

FUSEMASTER®

Part Number	Breaking Capacity (kA @ 500VAC)	Power Dissipation (W)	Unit Weight (g)
2076F-63	100	10.5	63
2076F-80	100	10.5	63
2076F-100	100	10.5	63

POWER DISSIPATION VALUES TYPE 2076F CUT-OUT FUSE LINKS TO AS2005, IEC269-1 & AS/NZS60269-2.1		SCALE	-
		DATE	01/02/2005
		DRAWN	TECH-GAL
ART. No.	FUSEMASTER 8 COMMERCIAL ROAD MOORABBIN VICTORIA 3189 AUSTRALIA	APPROVED	GM-FUS
TS036		ALTERATION	-